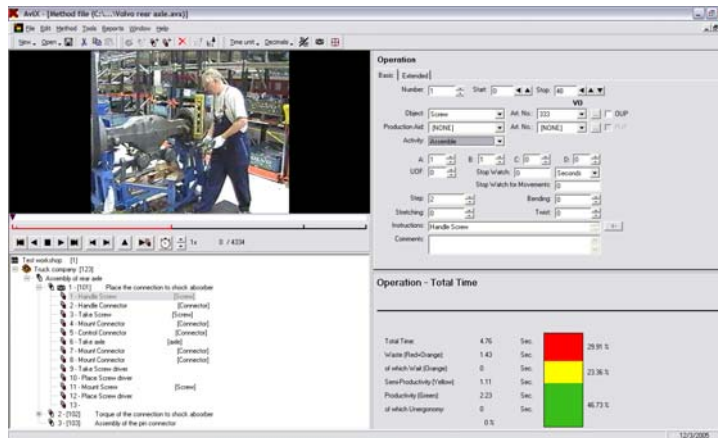


AviX Method

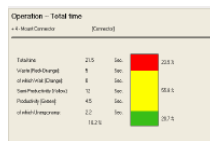


Time and Motion analysis using Video technology and Lean management

AviX Method is a video-based time and motion analysis software to be used in a workplace. AviX Method is successfully used to increase productivity by reducing cycle and resetting time.

Determine the base data for your improvement decisions

AviX Method uses pre-determinate time to set times for work operations. This much quicker and simple analysis method gives detailed information about the workstation as well as the production line. This information can be used in your continuous improvement program and for cost calculations, balancing of production lines and investment decisions.



Quick results

AviX Method gives quick answers on your improvement potential by identifying: pre-determined times, productivity and losses for: operations, components and tooling. A ready analysis also gives you a full documentation of your manufacturing process.

Simulate different investment propositions

AviX Method enables you to simulate different improvement and investment propositions by using its time system. This feature gives you the unique opportunity to forecast each proposition and pick the best alternative.

Estimate your improvement potential

By using AviX Method you can easily calculate your improvement potential. The system identifies areas of the process that contain the most losses, thereby directing you to the most cost effective improvement efforts. .



People involvement

AviX Method uses video technology to speed up analysis work and to communicate results. The video technology and color system identifies productive from nonproductive work, and enable you to involve everyone in the continuous improvement effort. The built-in pedagogic in the system allows you to base your continuous improvement program on the philosophy of people involvement, thereby using the full potential of your organization.

Modernize your Industrial Engineering and create more value

By using the latest software for manufacturing process analysis you can also modernize the methodologies and philosophies used within your Industrial Engineering department and thereby create more value for your customers.



Areas of usage

- Time and motion analysis
- Resetting time reduction
- Full video and photo documentation of work process including parts and tools.
- Cost and optimization calculations
- Improvement of productivity for workstations, machines and assembly line.
- Optimizing the layout for a work process incl. Balancing.
- Optimizing tooling for a work process
- Design product for assembly efficiency
- Continuous improvements
- Measuring productivity and improvement potential
- Extensive database and reports sharing
- Investment and outsourcing decisions
- Improve the ergonomics

Users

- Production
- Industrial Engineering
- Production Planning
- Product Development
- Purchasing
- Design department



Communicate

AviX Method is also a communication tool. Never before has it been easier to explain the complex nature of manufacturing processes to colleagues by using the video technology and color system. This advantage is a must to the people and organizations that strive to be among the best in their industry.



www.prologia.net